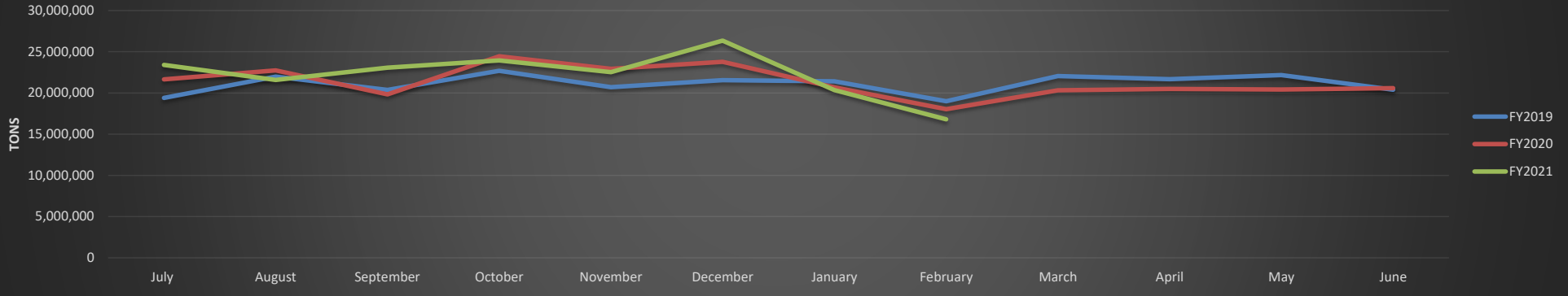




Albuquerque International Sunport
February 2021
Fiscal Year 2021
Cargo Activity

Albuquerque Sunport Cargo Activity



	July	August	September	October	November	December	January	February	March	April	May	June	FY Total
FY2019	19,405,056	21,967,638	20,368,040	22,687,264	20,695,926	21,557,578	21,409,464	18,994,950	22,038,162	21,673,300	22,179,878	20,389,476	253,366,732
FY2020	21,646,616	22,739,446	19,817,092	24,448,282	22,932,902	23,780,848	20,678,746	18,027,950	20,327,530	20,494,286	20,422,496	20,582,342	255,898,536
FY2021	23,390,698	21,586,574	23,064,308	23,933,234	22,524,338	26,347,908	20,340,188	16,800,230					177,987,478
CHANGE FROM PRIOR YEAR - MONTH	8%	-5%	16%	-2%	-2%	11%	-2%	-7%					
CHANGE FROM PRIOR YEAR YTD	8%	1%	6%	4%	3%	4%	3%	1%					